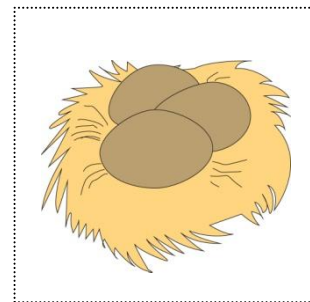
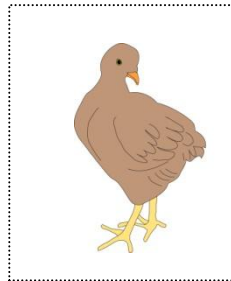
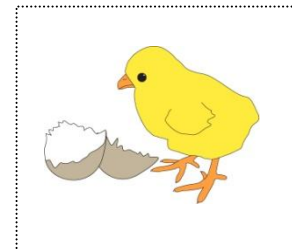
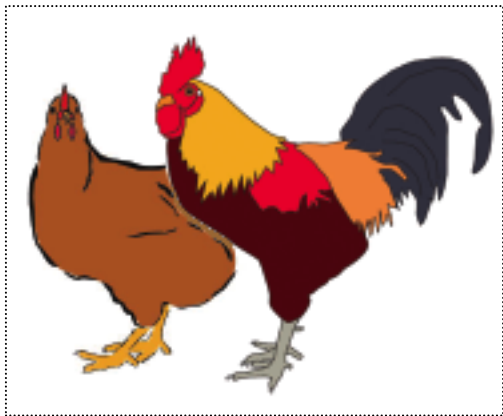


Life Cycle of a Chicken

Cut out the pictures and use them to create a chicken lifecycle in the box below. You will need to draw some arrows.

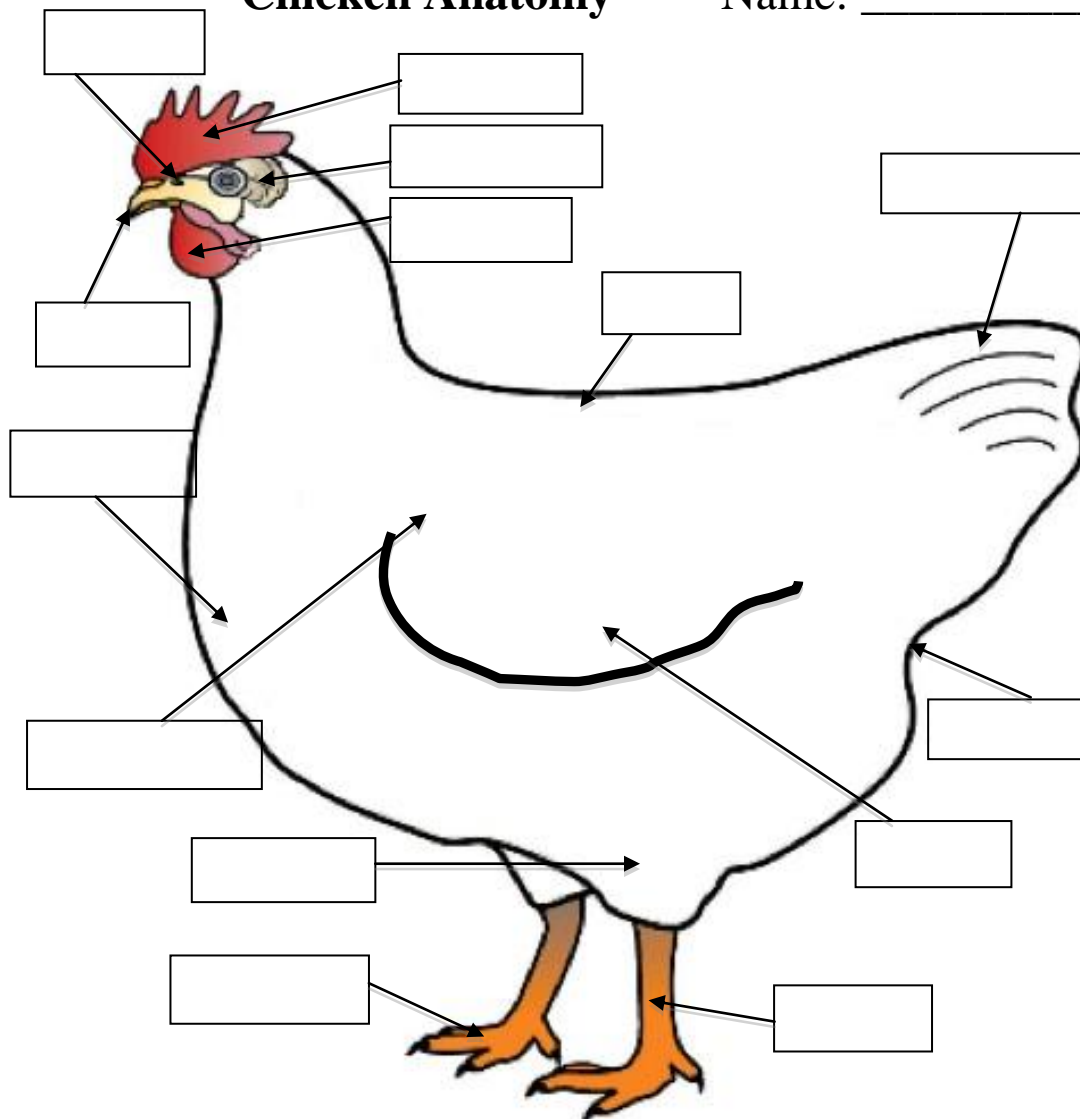


Lifecycle of a Chicken

Name: _____

Chicken Anatomy

Name: _____



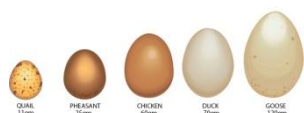
Use these words to label the chicken

foot
tail
shank
comb
beak
nostril
wattle
breast
shoulder
cloaca
back
wing
earlobe
thigh

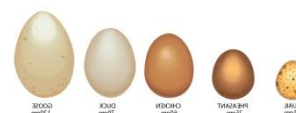
Hatching Chickens Naturally and in an Incubator

Under natural conditions chickens live for 8-10 years. To live a full and healthy life they need the correct environmental conditions to breed, grow and produce eggs. A rooster and a hen are needed to produce fertile eggs. In early spring a hen may start to go broody (clucky) and lay a batch of 12-15 eggs. After about 21 days the chicks hatch from the eggs. During the incubation period the hen provides all the environmental conditions needed to hatch the eggs. During this time she only leaves the nest for food and water.

Hatching eggs in an incubator either in the backyard or in commercial situations requires humans to provide the correct environmental conditions – temperature, humidity (an amount of moisture in the air), light, ventilation and movement. There is a lot of science and technology employed to imitate the natural process of hatching eggs. What a marvel a hen is!



Temperature and Time



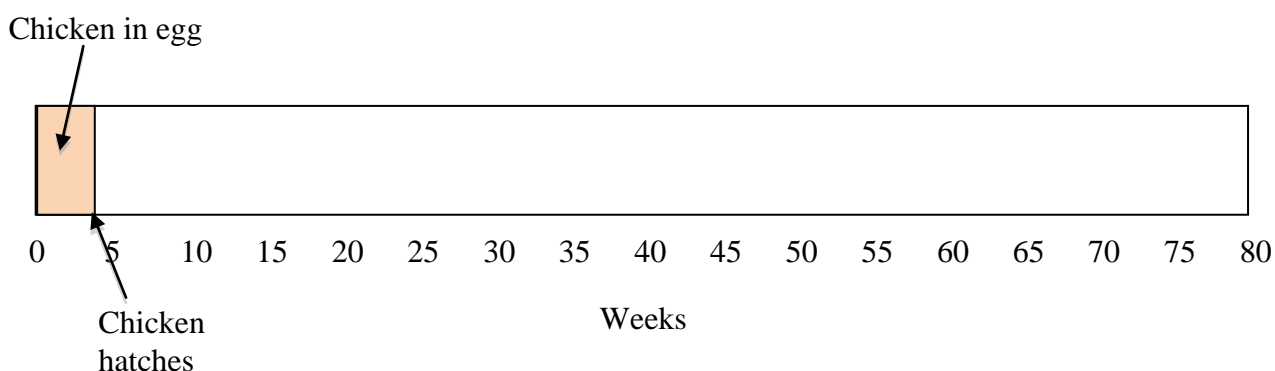
Name: _____

When **hatching** eggs the temperature should be kept constant at about 37-38°C. After 21 days the chicks hatch. After the chicks hatch the temperature in the incubator should be kept at 33°C for the first week and reduced 0.5°C a day until it reaches 24°C. When hatched naturally, the hen keeps the eggs/chicks warm.

The chickens grow for about 20 weeks and then the pullets start to lay eggs. They usually lay eggs for about 50 weeks and then producers may induce a moult (a period where no eggs are laid and old feathers are replaced) by changing their diet and reducing the amount of light for 2-4 weeks. When a full diet and lighting is returned the hens start laying again. Under natural conditions hens live for 8-10 years.

Tasks

1. Use a scale of 1cm = 5 weeks to show a graph of the first year or so of the life of a chicken. The first entry has been completed for you.



2. Use the information above to draw a line graph of the temperature requirements of eggs and baby chickens on the axes below.

Temperature Requirements for Eggs and Chicks

