

FINDING THE GOOD EGG

EGG CANDLING - WHAT TO LOOK FOR

The GOOD EGG



Perfectly whole, clean, unstained and unmarked with smooth shells



Eggs with minor pigmentation or speckle



Eggs lightly blood stained or slight mucous stains which are easily removed by washing



EXTERNAL SHELL DEFECTS

REMOVE from the grade

Eggs with damaged shells but have unbroken membranes and do not leak, have rough shells, misshapen, star cracks, hairline cracks or gross cracks - remove from grade.

Eggs with poor shell quality, porous or flat sided - may break if handled - remove from grade.

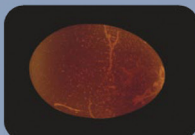
Moderately stained and soiled whole egg shells

GROSS CRACKS



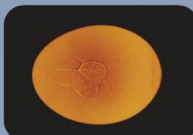
Large cracks and holes.

HAIRLINE CRACKS



Very fine cracks, difficult to detect, can be revealed by careful squeezing or tapping.

STAR CRACKS



Fine cracks radiating outwards from a central point, often slightly indented.

SOFT SHELLED EGGS



Eggs with very thin shells or no shell around the shell membrane.

SANDPAPERS & ROUGH SHELLS



Eggs with rough - textured area, often unevenly distributed over the shell.

MISSHAPEN EGGS



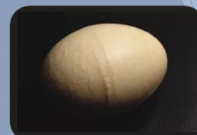
Shells with flat sides or ridges or grooves; eggs that are too large or too round.

FLAT-SIDED EGGS



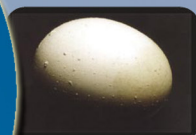
Part of shell flattened or indented.

BODY-CHECKED EGGS



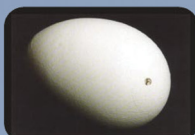
Marked by ridges or grooves called 'checks'.

PIMPLES



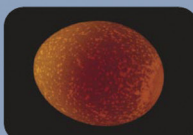
Small lumps of calcified material.

PINHOLES



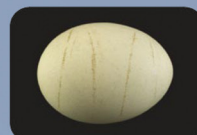
Very small holes in egg shell.

MOTTLED & GLASSY SHELLS



Parts of the shell are translucent, shell thin and fragile.

CAGE MARKS



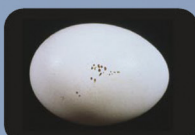
Dirty marks or lines.

STAINED EGGS



Stained by blood or faeces.

FLY MARKS



Fly droppings on the egg shell.

FUNGUS OR MILDEW



Eggs covered with a powdery material or beard-like growth.

FINDING THE GOOD EGG

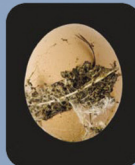
EGG CANDLING - WHAT TO LOOK FOR

"Your brand is only as good as your last egg sold"



DISCARD

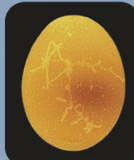
Excessive dirt, staining, soiling or leakage - discard



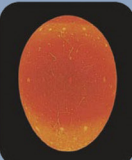
INTERNAL DEFECTS

Focuses on albumen cleanliness and viscosity, size of air cell, yolk shape and strength.

OLD CRACK



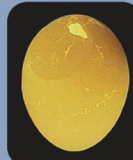
FRESH CRACK



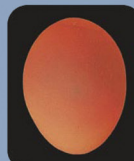
SOFT SHELL



BEAK OR TOE PUNCHED



BLOODSPOT IN WHITE EGG



BLOODSPOT IN BROWN EGG



BLOOD EGG



THE FINISHED PRODUCT

First quality finished product



"Your brand is only as good as your last egg sold"